

Console Tables

RETAIL PRICE LIST (11/15)



Manhattan

How does one entertain larger groups in a small space without cluttering the space when you aren't entertaining? These space-efficient console tables are less than 18"W when closed but can expand to almost 10 ft when fully opened.

The CORNING offers high-gloss finish choices of white or coffee cream while the METROPOLITAN and MANHATTAN offer several textured melamine finishes.

The CORNING uses 4 extension leaves to expand to 90", while the METROPOLITAN and MANHATTAN expand to 115" and 106" with 5 leaves and 4 leaves, respectively. While all tables offer an extra center table leg

when extended, the center leg on both the METROPOLITAN and the MANHATTAN swivels to get out of the way when seating guests.



Manhattan

Finally tables that can transform as your lifestyle



Manhattan



Metropolitan



Metropolitan

The MANHATTAN offers the additional feature of **STORING** the 4 leaves in the center leg for convenience.

Dimensions		Prices	
Corning	(15.75" - 90"W) x 37.5"D x 29.75"H	Corning	CALL
Metropolitan	(17.75" - 115"W) x 39.4"D x 29.75"H	Premium Finishes	CALL
Manhattan	(14.57" - 106"W) x 34.25"D x 29.5"H	Metropolitan	CALL
Lead Time	Check Dealer Stock, otherwise 10-16 wks	Premium Finishes	CALL
Shipping Weight	172 lbs	Manhattan	CALL
		Premium Finishes	CALL

Terms
50% deposit by check or credit card with order with balance due prior to delivery.

Pricing
Pricing does not include sales tax or delivery charges. All pricing shown is FOB destination (San Diego and vicinity). Typical local delivery charges are \$200.

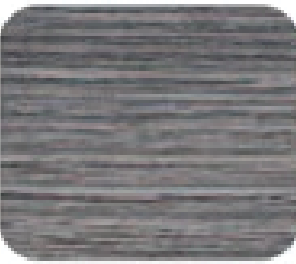
Console Table Finishes



White



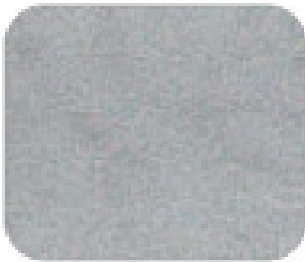
Gray



**Ancient
Ash**



**Ancient
Natural**



**Faux
Concrete***



Vintage



Walnut*



Dark Oak*

CorningHigh Gloss Coffee Cream, White Lacquered, Dark Oak*,
Matte White Oak Lacquer (not shown above)*
Metropolitan . . .White, Vintage, Dark Oak*, Faux Concrete*
ManhattanAll above

*** Premium Finishes - additional charges apply**